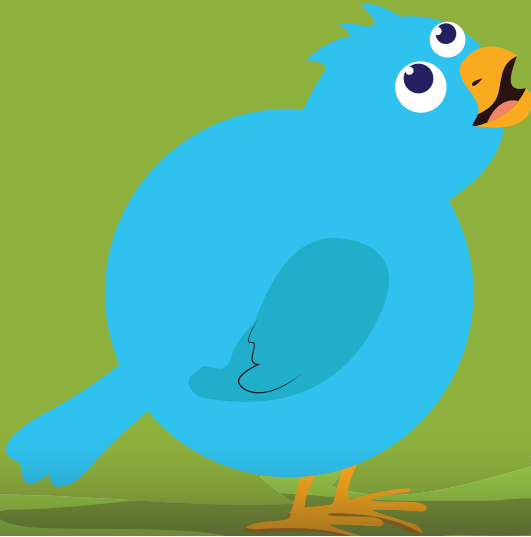


Level

E

# Why Trees Lose Their Leaves



*Written and Illustrated by Perry Scope*



# Why Trees Lose Their Leaves

*Written and Illustrated by Perry Scope*

Copyright © 2024 by Accelerate Learning Inc.

All rights reserved. Published by Accelerate Learning Inc. 5177 Richmond Ave, Suite 800, Houston, TX 77056. No part of this publication may be reproduced or distributed in any form or by any means, or stored in a database or retrieval system, without prior written consent of Accelerate Learning Inc., including, but not limited to, in any network or other electronic storage or transmission, or broadcast for distance learning.

To learn more, visit us at [www.stemscopes.com](http://www.stemscopes.com).

Every winter, birds fly  
south to keep warm.

One year, Bird hurt his  
wing. He could not fly.

He had to stay in the  
cold north.

“How will I keep warm?”

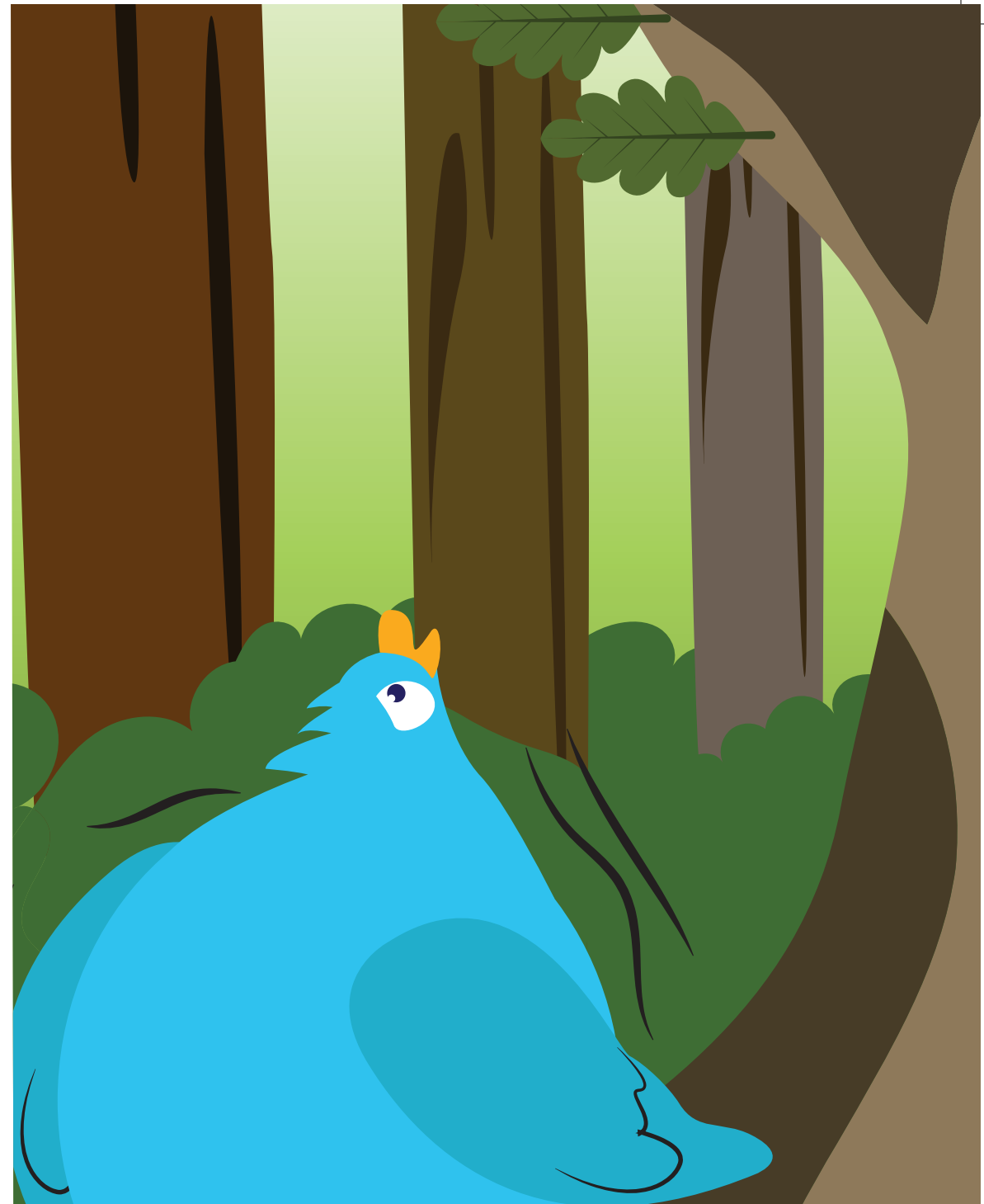
Bird asked.



Oak Tree had lots of  
big leaves.

“Oak Tree, may I stay  
in your branches this  
winter?” Bird asked.

“I hurt my wing and  
can’t fly. I need a  
place to stay warm.”



“No,” Oak Tree said.

Bird saw that Maple Tree  
had lots of big leaves.

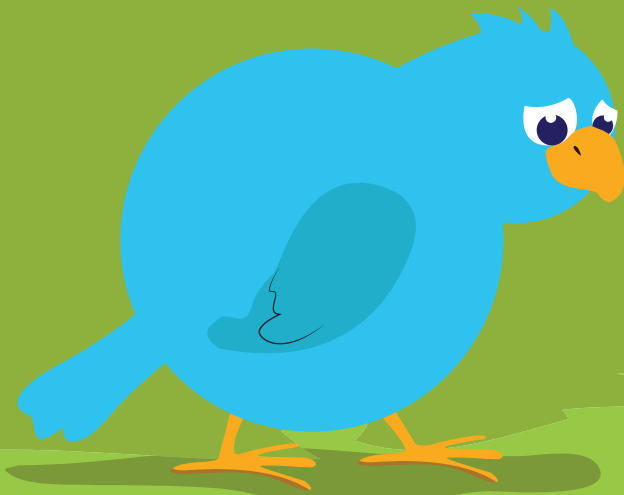
“Maple Tree, may I stay  
in your branches this  
winter?” Bird asked.

“I hurt my wing and  
can’t fly. I need a place  
to stay warm.”



“No,” Maple Tree said.

Then, Bird saw Pine  
Tree. Pine Tree's leaves  
were thin and sharp.  
Still, Bird asked Pine  
Tree for help.



“Pine Tree, may I stay  
in your branches this  
winter?” Bird asked. “I  
hurt my wing and can’t  
fly. I need a place to  
stay warm.”



Pine Tree said, “You may  
stay in my branches as  
long as you would like.”



Bird stayed in Pine  
Tree's branches until  
spring came. Bird's wing  
was all better. The  
Leader of All Animals  
came to the forest.



“Hello, Bird,” the Leader  
said. “Why did you stay  
in Pine Tree's branches  
all winter?”

“I asked the other trees,  
but they said no,”

Bird said.

The Leader was angry.



“You did not help Bird  
when he needed you,”

the Leader told the

trees. “Now, all your

leaves will fall off

before every winter.”

So, that is why trees  
lose their leaves when  
fall comes. It marks the  
start of winter. Since  
Pine Tree was kind to Bird,  
Pine Tree does not lose its  
leaves like other trees!





Level

E

Every year, birds fly south  
for the winter to keep warm.  
One year, Bird is injured  
and can't fly south. Will any  
tree help Bird?

Lexile Measure

Kindergarten	A-D	BRL-230L	
Grade 1	E-J	200L-550L	430L
Grade 2	K-M	420L-795L	

**STEMscopes™**  
K-12 SCIENCE

